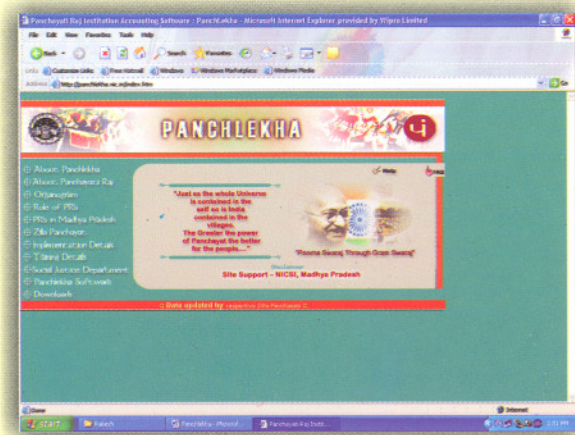
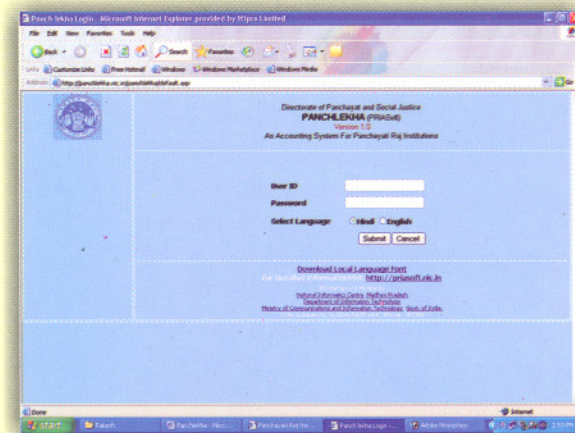


PANCHLEKHA



*"Purna Swaraj
through
Gram Swaraj"*



OBJECTIVE

- Management of Funds in a effective, efficient and transparent manner
- Monitoring of Revenue & Expenditure on monthly/daily basis
- Timely availability of Budget Allotment, Expenditure for any level of Account Head
- Adherence to CAG guidelines

FEATURES

- Simple Design
- Bi-lingual Support
- Scheme-wise monthly as well as voucher level entry
- Internet based data transmission
- Easy customization & deployment
- Reduction of redundant efforts at various layers of PRIs
- Decision support information for analysis and fund Management at PRI level

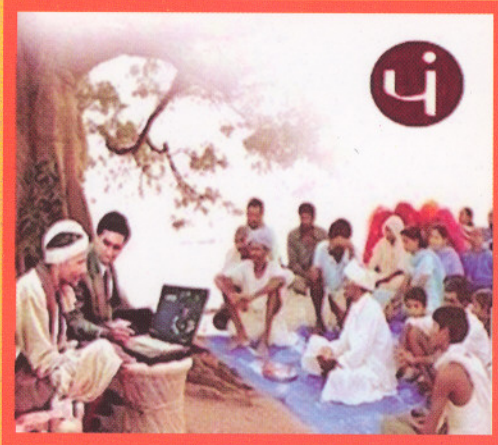
BENEFITS

- Aggregation and Analysis by Accounting head as per CAG guidelines
- Transparency in the fund flow
- Re-engineering of the process
- Removal of drudgery in the accounts compilation
- Local language interface results in ease of operation by the user
- Computer awareness among the staff of PRIs

SCALABILITY/REPLICATION

- The present Intranet deployment can easily be scaled up for the Internet environment in a seamless manner
- The back end database Microsoft Data Engine (MSDE) is a fully SQL Server-compatible database engine
- This provides a low-cost solution for the near term, while maintaining a clear migration path for future growth
- The choice of operational level gives the flexibility to scale the application to all the four tiers of PRIs
- The application follows standard procedures of accounting suiting the requirement of other states too, hence is replicable with minimum or no customization

OVERVIEW



Computerization of the Panchayat Raj Institution (PRI) accounts is designed for the efficient management and monitoring of funds at the level of Janpad Panchayat, Zilla Panchayat & State Head Quarters. The system is aimed at empowering the administrators to monitor the fund receipt, availability, and expenditure at all levels of four-tier administrative set up of PRI's. It facilitates the generation of various reports, providing decision support information for analysis and fund management at PRI level.

The software for financial accounting of PRI's is named as "PanchLekha". The basic unit and focal points of Panchayati Raj System are Gram Sabhas (GS) and Gram Panchayats (GP) from where the data originates. The software will capture the details of monthly as well as daily receipts and payments at the root level i.e. GP/GS and facilitate the transmission of compiled accounts from Janpad Panchayats to Zilla Panchayats, Zilla Panchayat to Directorate of Panchayat & Social Justice for monitoring and management. The automation of financial accounting shall lead to systematic maintenance of accounts of PRI's, ease in preparation and compilation of voluminous accounts and related reports. This will result in reduction of redundant efforts at various levels of PRIs and timely submission of the accounts to Directorate of Panchayat and Government. The information thus collected can be published on Internet for consumption of various agencies and citizens.

"Just as the whole

Universe is contained

in the self, so is

India in the villages .

The greater the power of

Panchayats the better

for the people ... "

SCOPE

The software can be implemented at Janpad Panchayat, Zilla Panchayat and Directorate Level. The Subsystems of Budget distribution, accounting of Receipt & Payment is responsible for data entry and maintenance of records. After data transmission from Janpad Panchayat to Zilla Panchayat the Consolidation & Compilation of data takes place at Zilla Panchayat and then the same is transmitted to Directorate of Panchayat. Reports/Query Subsystem facilitates to provide the information in a user friendly and desired format, both on screen and in hard copy. Also, macro-level information is made available on the net. The system is a user friendly, strategic accounting cum information system that curtails the time spent in manual preparation of accounts considerably.

